



Webbs
Helping people move since 1994

Levett Grange | Rugeley | WS15 2FB
Offers In The Region Of £320,000

 **Webbs**
estate agents

Summary

WEBBS ESTATE AGENT have the pleasure of offering this well-presented and modern four-bedroom detached home, tucked away in a cul-de-sac within easy reach of local amenities, schools and commuter links. Offering well well-presented living space throughout and a beautifully maintained, low-maintenance, south-facing garden.

Levett Grange is situated in a desirable residential area of Rugeley, offering easy access to local schools, including Chancel Primary School, as well as shops, supermarkets and leisure facilities. Excellent transport and commuter links make this an ideal location for those working in the surrounding areas. Briefly Comprises: Entrance Hall, Guest WC, Lounge, Breakfast Kitchen, Conservatory, First Floor Landing, Four Bedrooms, Ensuite Shower Room, Family Bathroom.

To the front is a neat lawned fore garden with planted borders and a driveway providing access to the SINGLE GARAGE. To the rear, the south-facing garden is fully enclosed, beautifully landscaped with a patio area, raised flower borders, decked seating area, and an outside tap—perfect for summer evenings or family get-togethers.

Key Features

- POPULAR LOCATION
- CUL-DE-SAC POSITION
- BATHROOM & ENSUITE
- KITCHEN DINER
- GARAGE & DRIVEWAY
- DETACHED FAMILY HOME
- FOUR BEDROOMS
- LOUNGE
- CONSERVATORY
- FRONT & REAR GARDENS

Rooms and Dimensions

ENTRANCE HALLWAY

GUEST WC

LOUNGE

17'5" x 17'1" (5.32m x 5.22m)

KITCHEN DINER

17'6" x 9'10" (5.34m x 3.00m)

CONSERVATORY

11'3" x 7'6" (3.43m x 2.29m)

LANDING

BEDROOM ONE

11'3" x 9'1" (3.43m x 2.79m)

ENSUITE SHOWER ROOM

BEDROOM TWO

9'8" x 8'11" (2.95m x 2.72m)

BEDROOM THREE

10'9" x 5'11" (3.28m x 1.82m)

BEDROOM FOUR

8'9" x 6'5" (2.68m x 1.98m)

FAMILY BATHROOM

GARAGE

DRIVEWAY

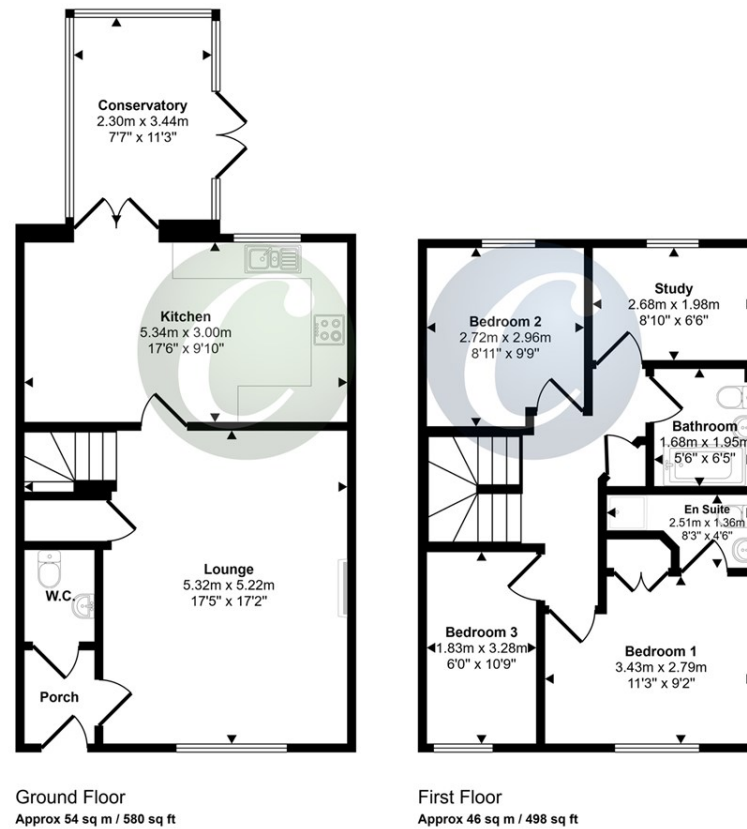
FRONT & REAR GARDENS

Identification Checks (R)



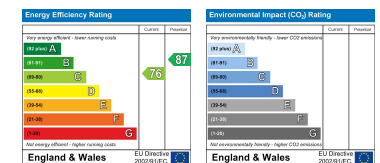


Approx Gross Internal Area
100 sq m / 1079 sq ft



This floorplan is only for illustrative purposes and is not to scale. Measurements of rooms, doors, windows, and any items are approximate and no responsibility is taken for any error, omission or mis-statement. Icons of items such as bathroom suites are representations only and may not look like the real items. Made with Made Snappy 360.

Webbs Estate Agents - endeavour to maintain accurate depictions of properties in Virtual Tours, Floor Plans and descriptions, however, these are intended only as a guide and purchasers must satisfy themselves by personal inspection.



Globe House Upper Brook Street, Rugeley, Staffordshire, WS15 2DN

Tel: 01889 583377 | Email: rugeley@webbsea.co.uk | www.webbestateagents.co.uk